



## 18 Garretts Mead, Luton, LU2 9BY

Available from the mid of August on an unfurnished basis, this well presented three bedroom family home is situated in the highly sought after area of Garretts Mead, Stopsley.

The property offers generous living accommodation, comprising a spacious living room, a bright conservatory overlooking the garden and a convenient downstairs cloakroom. Upstairs, there are three well proportioned bedrooms, all served by a modern family bathroom.

Externally, the property boasts a large rear garden, ideal for families and outdoor entertaining, along with off road parking for up to five vehicles.

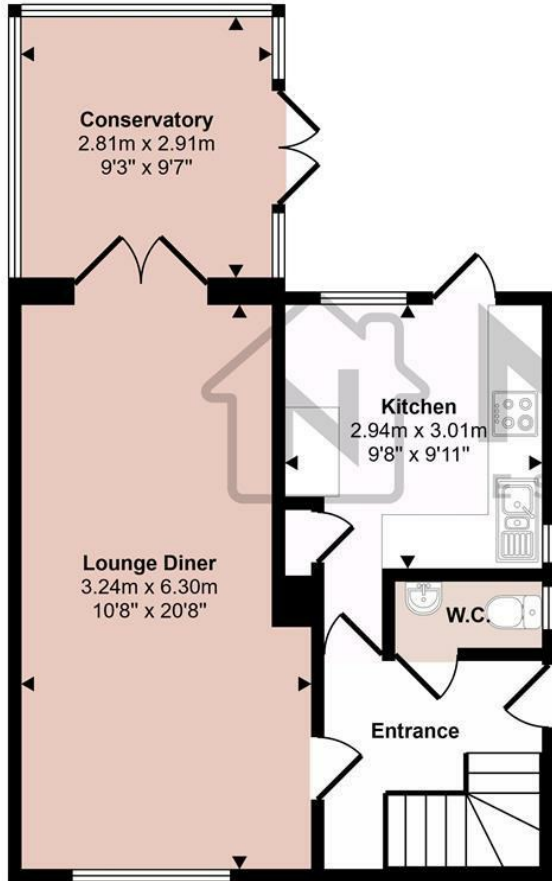
Ideally located within easy reach of excellent local schools, shops and everyday amenities, this home also benefits from good transport links, making it perfect for families and commuters alike.

Early viewing is highly recommended, call Nova Estate Agents Now.

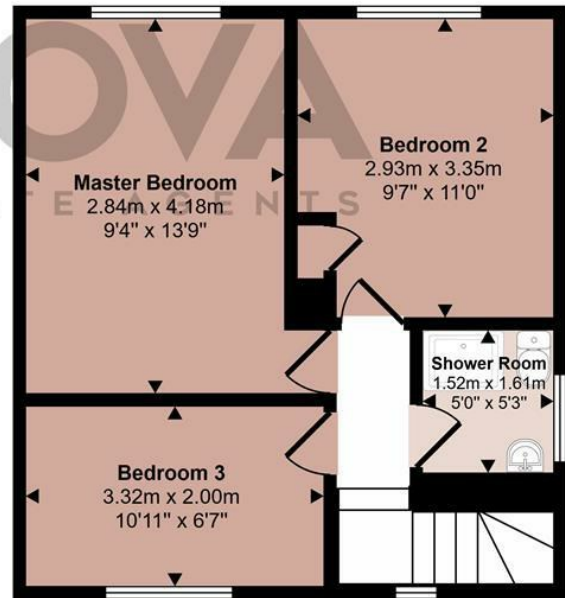
£1,650 Per month

- Nova Estate Agents
- Press Play Button For 360° Walkaround Tour
- Available Mid August
- Unfurnished
- 3 Bedroom House
- Driveway for 5 Cars
- Conservatory To Rear
- Large Garden
- Popular Stopsley Location
- Downstairs Cloakroom

Approx Gross Internal Area  
84 sq m / 900 sq ft



Ground Floor  
Approx 46 sq m / 497 sq ft



First Floor  
Approx 38 sq m / 404 sq ft

This floorplan is only for illustrative purposes and is not to scale. Measurements of rooms, doors, windows, and any items are approximate and no responsibility is taken for any error, omission or mis-statement. Icons of items such as bathroom suites are representations only and may not look like the real items. Made with Made Snappy 360.

